

Blood Bank Refrigerated Centrifuge

Blood Bank Refrigerated Centrifuge



MP 6000 R



MP 6001 A



PP Blood Bag Carrier

Technical Data (MP 6000 R)

(W) 860 mm x (D) 960 mm x (H) 965mm
 Weight : 285 Kg, Connected Load : 10 kVA,
 Max. Speed : 4800 RPM, Max. RCF : 6000 xg,
 Max. Tube Size : 500 ml, Max. Capacity : 6000 ml.

Swing Out Rotor Heads and carriers for Blood Bank Applications suitable for Centrifuge Model MP 6000 R

Model	Cap./ml		RPM	RCF xg
MP 6001 + MP 6001 A	12	Blood Bags of 450 ml (Triple Bag System)	4500	6000
MP 6001 + MP 6001 B	6	Blood Bags of 450 ml (Triple Bag System)	4500	6000
MP 4001 + MP 4001 A	8	Blood Bags of 450 ml (Triple Bag System)	4800	5650
MP 4001 + MP 4001 B	4	Blood Bags of 450 ml (Triple Bag System)	4800	5650

* All microprocessor centrifuges can be offered with CE Marking.

The range of Blood component separation equipment and Hi-Volume Centrifuges are designed for Blood bags, large capacity centrifuge tubes and bottles. These centrifuges are mainly used in chemical and pharmaceutical processing, Biotech Labs, Blood Banks etc. where large volume tubes, bottles and blood bags are used.

MP 6000 R

Features :

- Microprocessor controls.
- 99 program memory.
- Brush less induction motor drives.
- CFC free cooling system.

Programmable Features :

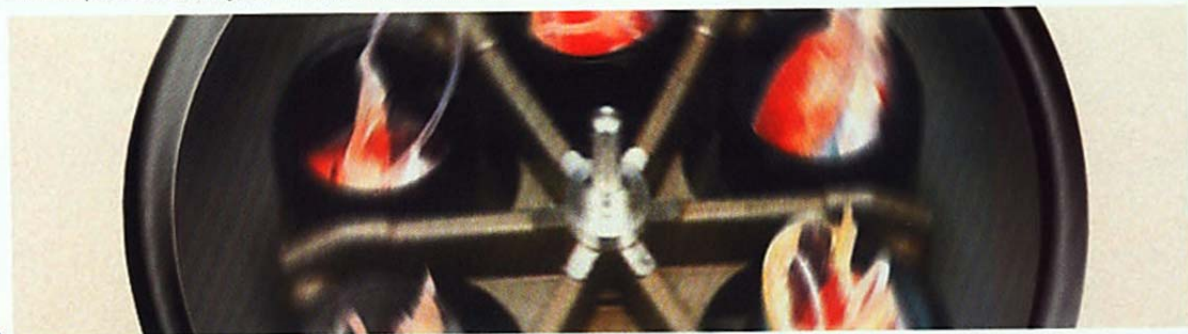
- Speed control up to 5000 RPM with 10 RPM increment.
- Temperature in the range -20 °C to + 40 °C with 1 °C Working temp range -5 °C to 20 °C.
- Preset timer range 1 to 120 minutes with 1 minute increment & infinite mode.
- User programmable Acceleration and Deceleration time range from 40 seconds to 450 seconds.

Other Features, Displays & Safety Systems :

- Continues read out of working RCF Value.
- Pre-cooling and standby cooling facility.
- Programmed Emergency lid lock release in case of power failure.
- Safety lid open.
- Imbalance indication and safety switch off mechanism.
- Hydraulic hold for lid.
- Mechanical and Electronic lid lock with indicator.
- Floor Model heavy duty unit with epoxy coated body and stainless steel chamber.

Dimensions:

- Dimension(W x D x H) mm: 860 x 960 x 965.



1